

WOOD HEATING COLLECTION

CLEAN AIR
WOODHEATERS



MADE FOR AUSTRALIA | AUSTRALIAN OWNED & OPERATED





WHO WE ARE?

Clean Air wood heaters was established in 1994 in Sunbury, Victoria.

Clean Air wood heaters are distributed in Australia by Pricotech Leisure Brands, an Australian owned and operated company that deals exclusively with wood heating products. Our team has over 60 years' combined experience in design, development, manufacturing and sale of wood heaters in Australia.

This in-depth knowledge, when matched with extensive worldwide research and internationally renowned materials allows us to develop a genuinely innovative range of wood heaters that are clean burning and highly efficient and exhibit range leading long burn times.

WHY BUY A SLOW COMBUSTION WOOD HEATER?

Slow combustion wood heaters, such as Clean Air wood heaters, are a great home heating source during the winter months. Slow combustion wood heaters create less emissions and use less firewood than the traditional open fireplace. This is due to a slow combustion wood heater fire being a sealed, airtight box, allowing the flames to be controlled and ensuring the wood burns more efficiently and produces less particle emissions than an open fireplace.

Wood, as a form of natural energy, is the only sustainable and renewable fuel source for heat generation. Therefore, wood burning in a slow combustion wood heater, such as a Clean Air wood heater, does not add to the greenhouse effect. If wood is left to naturally decay, consumed in a bush fire or burnt in a wood heater, it produces similar levels of CO₂. Clean Air wood heaters are slow combustion wood heaters which use low emission and high efficiency technology to gain maximum heat output, with minimum emission into the atmosphere

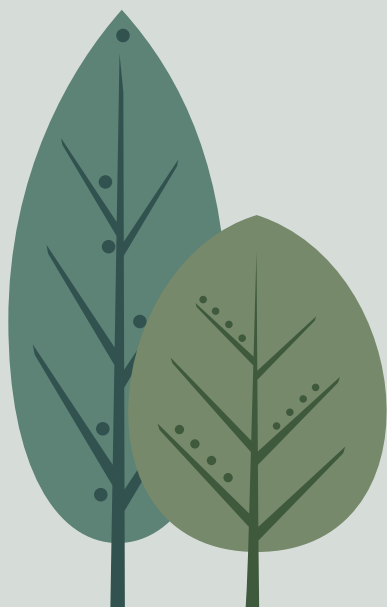
WHY BUY A CLEAN AIR WOOD HEATER?

Clean Air heaters offer a state-of-the-art firebox design to give you an extremely long burn time for those cold winter nights. The exclusive heat exchange activation tubes run directly through the firebox, to extract more heat from the fire. These heat exchange tubes are unique to Clean Air and not found on any other wood heater. This is just one reason why Clean Air is one of the most advanced wood heaters in Australia.

The clean-burning technology ensures that there is a minimum build-up of soot that can get stuck in your flue, so your fire is always visible and the glass is cleaner. The refractory lining is used to line the firebox for all our Clean Air wood heaters. The Hi-tech refractory baffle is a highly heat-reflective material, which ensures that it pushes the heat back into the fire, making it a cleaner burn while minimising the emissions. The innovative convection design also allows the hot air to naturally circulate around the firebox and into your room.

All Clean Air wood heaters come with a 15-year firebox structural warranty to give you peace of mind if anything does happen. Each heater is crafted with quality materials and unrivalled construction for the ultimate performance, winter after winter.

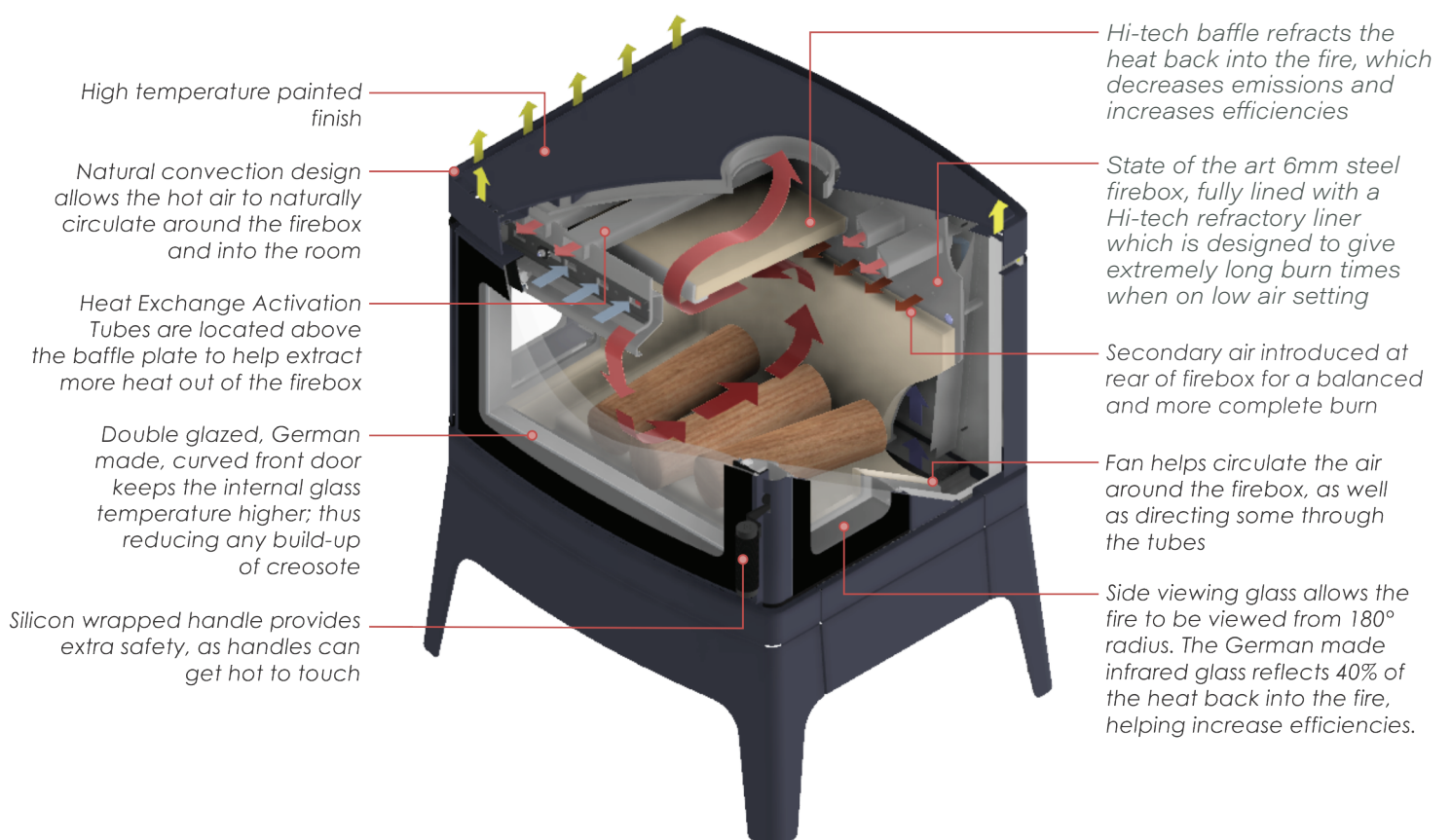
Buying a Clean Air wood heater not only gives you a clean burning and highly efficient method of keeping your home warm throughout winter, you are also purchasing from a member of the Australian Home Heating Association, and in turn supporting Landcare.



KEEP YOUR FAMILY COSY IN THE COLDER MONTHS WITH THE WARMTH AND TIMELESS CHARM OF A WOOD FIRE

Clean Air wood heaters have been designed and developed in Australia, Inspired by international trends and technologies. With Australian Design, German glass, Danish firebox lining and German coatings, Clean Air are a genuine global wood heater.

Our low emissions and high efficiencies simply mean that a Clean Air wood heater is the perfect choice when looking for a quality wood heater to warm your home this winter.



CLEAN AIR FREESTANDING HEATERS



15 YEAR
STRUCTURAL
FIREBOX
WARRANTY



SMALL CONSOLE

CACS19MB

815H x 709W x 592D mm

Coverage: Up to 200m²

Peak Heat Output: 12kW

Burn Time: up to 8 hours

Maximum Log Size: 340mm

Construction: 6mm steel firebox
with refractory lining

Firebox Volume: 0.05m³

Baffle: 25mm Hi-tech refractory baffle

Fan: 3 speed remote controlled fan

Efficiency: 72%

Emissions: 0.95g/kg



MEDIUM CONSOLE

CACM19MB

865H x 759W x 615D mm

Coverage: Up to 300m²

Peak Heat Output: 14.2kW

Burn Time: up to 10 hours

Maximum Log Size: 380mm

Construction: 6mm steel firebox
with refractory lining

Firebox Volume: 0.07m³

Baffle: 25mm Hi-tech refractory baffle

Fan: 3 speed remote controlled fan

Efficiency: 70%

Emissions: 0.85g/kg



LARGE CONSOLE

CACL19MB

915H x 859W x 700D mm

Coverage: Up to 350m²

Peak Heat Output: 19.2kW

Burn Time: up to 12 hours

Maximum Log Size: 420mm

Construction: 6mm steel firebox
with refractory lining

Firebox Volume: 0.1m³

Baffle: 25mm Hi-tech refractory baffle

Fan: 3 speed remote controlled fan

Efficiency: 70%

Emissions: 0.76g/kg

** All Clean Air heaters come in a high temperature Metallic Black finish*

CLEAN AIR INSERT HEATERS



15 YEAR
STRUCTURAL
FIREBOX
WARRANTY

MEDIUM INSERT

CAISM19MB

Coverage: 280m²

Peak Heat Output: 12.5 kW

Burn Time: up to 9 hours

Maximum Log Size: 390mm

Construction: 6mm steel firebox
with Refractory lining

Firebox Volume: 0.07m³

Baffle: 25mm Hi-tech refractory baffle

Fan: 3 speed remote controlled fan

Efficiency: 66%

Emissions: 0.8g/kg

15 YEAR
STRUCTURAL
FIREBOX
WARRANTY



The traditional and refined look of the Heritage surround is designed to fit behind the Clean Air insert heater making it suitable for older style fireplaces.

Clean Air's range of insert wood heaters can also be installed into timber stud wall or cabinet provided they are fitted with a Maxiheat Zero Clearance Box and flue kit (MXZEROBOX + MXFK3Z).

Making Clean Air inserts an ideal heating solution for any new home builder or renovator who is looking for the warmth, comfort and ambiance of an insert wood heater but doesn't have or want a masonry/brick fireplace.

*Medium and Large available with a Metallic Black Heritage surround, sold separately pictured. Mantle not supplied.

MEDIUM INSERT WITH HERITAGE SURROUND

CAISM19MB + CAHSHMM

Coverage: Up to 280m²

Peak Heat Output: 12.5 kW

Burn Time: up to 9 hours

Maximum Log Size: 380mm

Construction: 6mm steel firebox with refractory lining

Firebox: 0.07m³

Baffle: 25mm Hi-tech refractory baffle

Fan: 3 speed remote controlled fan

Efficiency: 66%

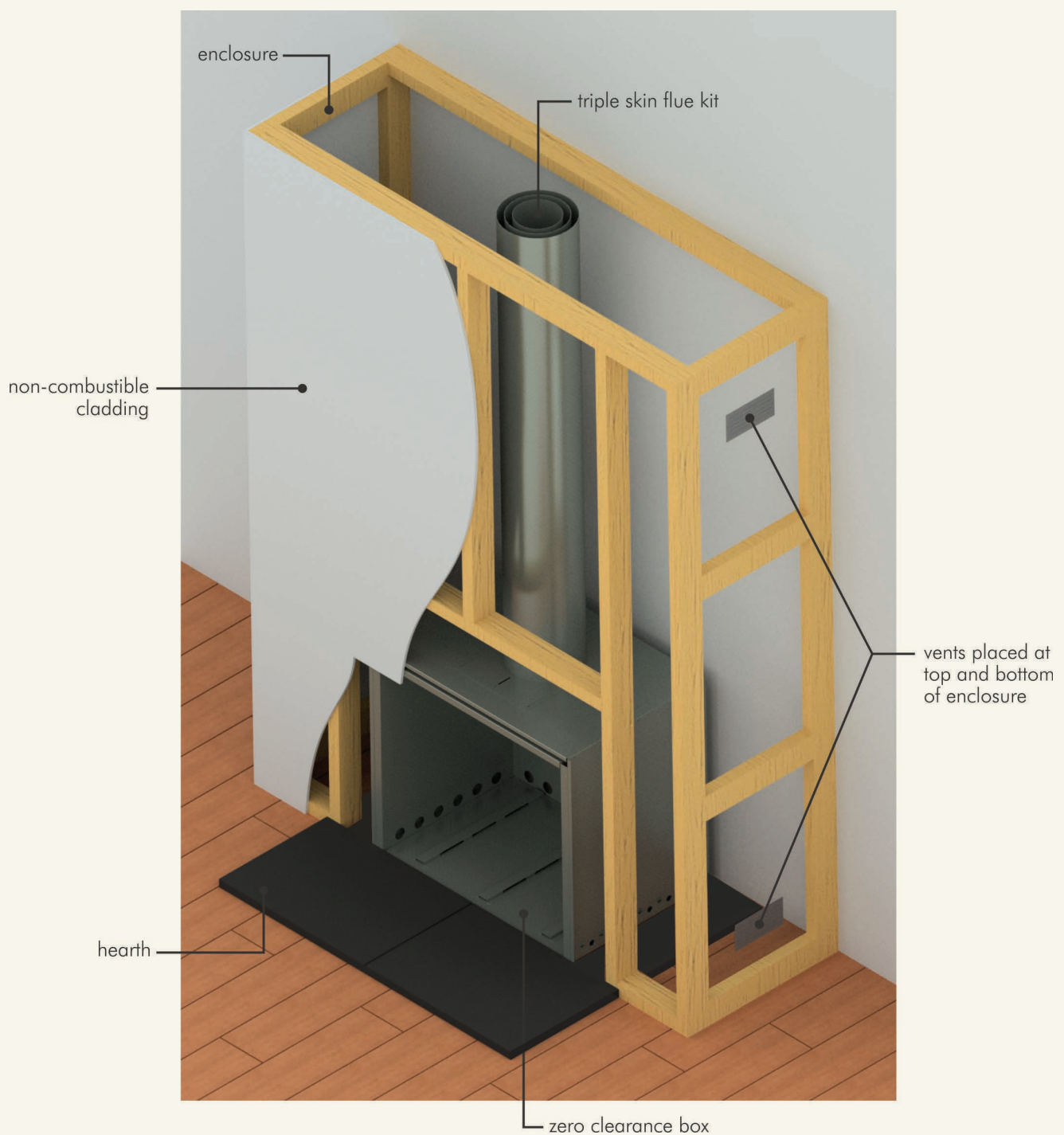
Emissions: 0.8g/kg

ZERO CLEARANCE INSTALLATION

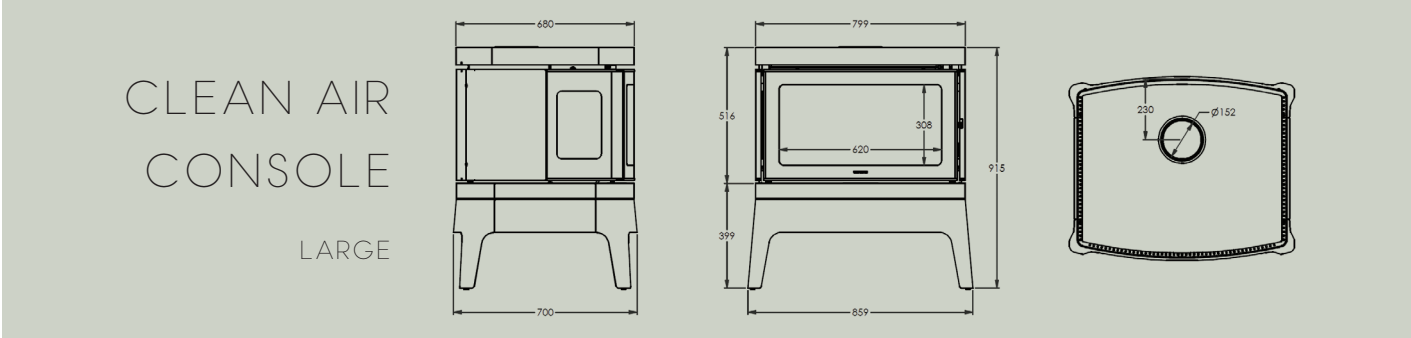
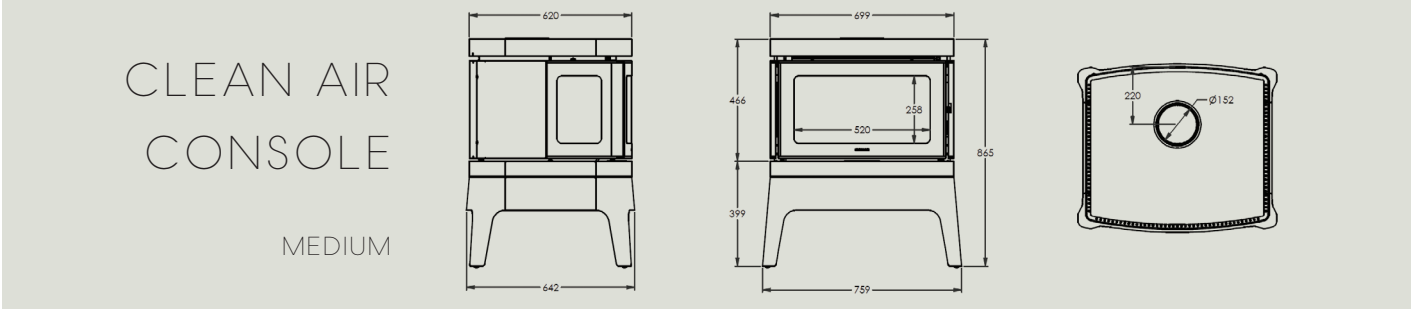
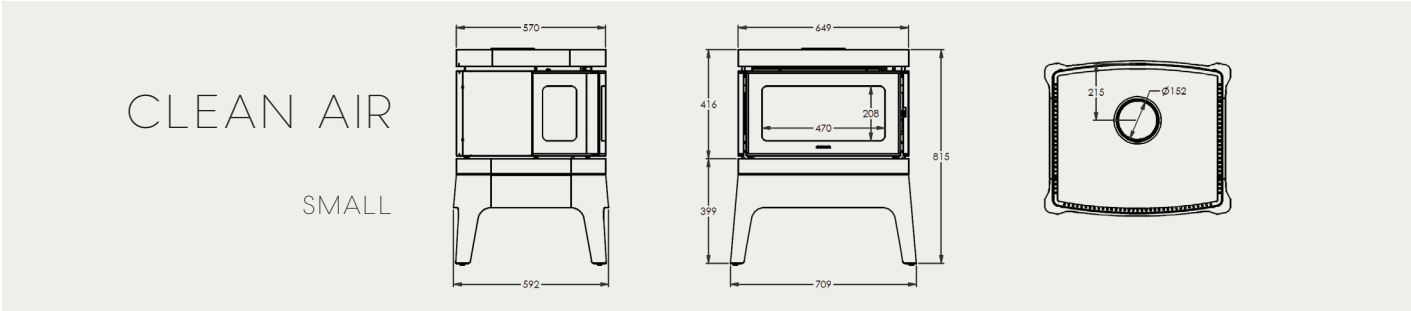
Transform a dull blank wall into a magnificent fireplace with our Zero Clearance models. Most importantly, no major structural alterations or existing chimney is required.

Refer to instruction manual or website (www.cleanairwoodheaters.com.au) for additional information, including minimum clearances and hearth specifications.

*drawing is a guide only



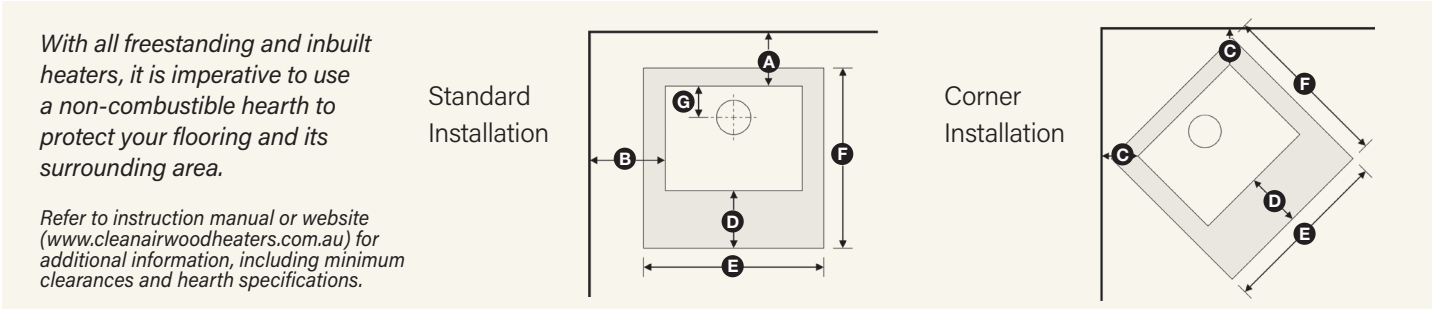
SPECIFICATIONS



FLUE CONFIGURATION		CLEARANCES (MM)				*HEARTH MIN. DIMENSIONS (MM)		REAR TO CENTRE FLUE (MM)	**RECOMMENDED MAXIHEAT HEARTH
		REAR WALL	SIDE WALL	CORNER	HEARTH FRONT	WIDTH	DEPTH		
FREESTANDING		A	B	C	D	E	F	G	
SMALL CONSOLE	Maxiheat Decromesh Default Flue Kit with inner shield (MXFKDEC3MB + MXRSISS2)	100	450	100	300	910	833	215	MXTH1GRY2/BLK2
	Maxiheat Non-Perforated Flue Kit with inner shield (MXFKSD3MB)	100	450	100					
MEDIUM CONSOLE	Maxiheat Decromesh Default Flue Kit with inner shield (MXFKDEC3MB + MXRSISS2)	150	550	200	300	960	878	230	MXTH12GRY2/BLK2
	Maxiheat Non-Perforated Flue Kit with inner shield (MXFKSD3MB)	150	550	200					
LARGE CONSOLE	Maxiheat Decromesh Default Flue Kit with inner shield (MXFKDEC3MB + MXRSISS2)	200	650	225	300	1060	927	230	MXTH12GRY2/BLK2
	Maxiheat Non-Perforated Flue Kit with inner shield (MXFKSD3MB)	250	650	200					

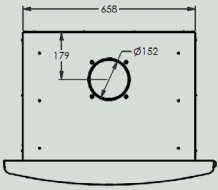
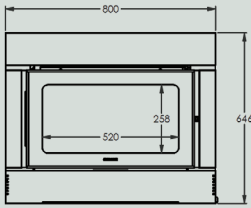
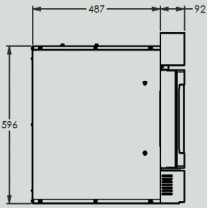
* Minimum Hearth Dimensions: These are minimum measurements required to meet the Australian Standard AS/NZS2918 (Note: will not cover floor from rear of heater to wall)

** Recommended Hearth: Recommended hearth to ensure all requirements are met including covering the floor for rear of heater to wall.



CLEAN AIR INSERT

MEDIUM



	CABINET (mm)	FASCIA (mm)	APPROX HEAT CAPACITY	RECOMMENDED HEARTH (mm)	TOP OF HEATER FASCIA TO MANTLE (mm)	SIDE OF HEATER FASCIA TO MANTLE COLUMN (mm)
STANDARD INSERTS						
MEDIUM	596 (H) x 658 (W) x 487 (D)	646 (H) x 800 (W)	280m ²	600(D) x 1200(W) x 56 THICK INCLUDING A 15MM AIR GAP (MXTHINSBLK/GRY or equivalent)	550	50
ZERO CLEARANCE	817 (H) x 838 (W) x 578 (D)					
DISTANCE FROM REAR OF FASCIA TO CENTRE FLUE 308mm						

HERITAGE INSERTS						
MEDIUM	596 (H) x 658 (W) x 487 (D)	765 (H) x 935 (W)	280m ²	600(D) x 1200(W) x 56 THICK INCLUDING A 15MM AIR GAP (MXTHINSBLK/GRY or equivalent)	550	50
ZERO CLEARANCE	817 (H) x 838 (W) x 578 (D)					
DISTANCE FROM REAR OF FASCIA TO CENTRE FLUE 308mm						



CLEAN AIR WOODHEATERS

YOUR AUTHORISED CLEAN AIR DEALER



Clean Air wood heaters proudly support the activities of Landcare Australia through its membership of the AHHA



GLG Australia PTY LTD – Building A2, Campus Business Park, 350-374 Parramatta Rd Homebush NSW 2140.
www.cleanairwoodheaters.com.au P: 02 9735 4100

Refer to Instruction manual for installation specifications such as clearances to combustible materials and hearth construction. Peak heat output and burn times may vary depending on fuel type, moisture content and loading. Clean Air wood heaters have been tested with Maxiheat flue systems and comply with the MOST RECENT Australian Standards AS/NZS2918. Heating output may vary depending on climate conditions and house design. Details provided in this brochure regarding the installation of a Zero Clearance System are for information purposes only and should not be relied upon as full installation instructions. Heating capacities may vary according to firewood species and moisture content; climatic conditions and home construction; individual room or home dimension; and installation levels. The manufacturer reserves the right to alter design and specifications at anytime.

Jan 2024