



Long overnight burn times
for a warmer winter

CLEAN AIR
WOODHEATERS

INNOVATION • PERFORMANCE • EFFICIENCY

Clean Air Wood Heaters

Keep your family cosy in the colder months with the warmth and timeless charm of a wood fire.

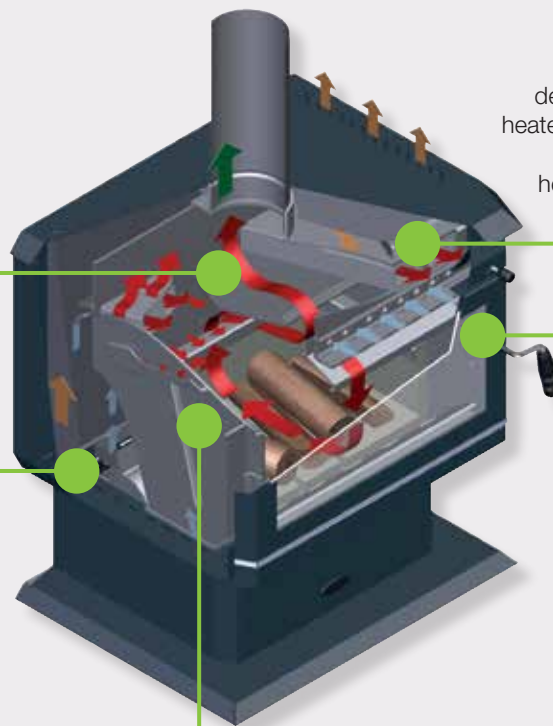
Clean Air wood heaters feature a unique and advanced firebox, designed and engineered with quality materials for optimum performance. Our overnight burn times of up to 12 hours, low emissions and high efficiencies simply mean that a Clean Air wood heater is the perfect choice when looking for a quality wood heater to warm your home this winter.

Longer burning fire

The stainless steel baffle plate contains the fire within the firebox, prolonging the burning process, resulting in a cleaner and more complete burn. The **removable baffle** comes with a 10 year warranty and is available with medium and large models only.

Heat the entire room

Reach all corners of the room with the fitted **3 speed fan**



Greater heat output

Built into the firebox, the **4 heat exchange activation tubes** deliver a larger available surface area to be heated, producing greater heat output. Sitting in an inclined position at the front of the heater, the tubes ensure the heat is forced away from the fire, enhancing air flow.

More efficient heat

The **quad burn system** draws in more air through 4 sets of air holes; front, side and rear. More cool air in means more heated air out.

Built tough to last

Fully welded firebox features quality construction with reinforcing, no cracks or gaps at the joints and is fully sealed for optimum performance

Every Clean Air wood heater comes with a 15 year firebox structural warranty. Each heater is crafted with quality materials and unrivalled construction for ultimate performance winter after winter.

**15 YEAR
FIREBOX
STRUCTURAL
WARRANTY**

**A wood fire
transforms a house
into a home, a place
for family to get
together and unwind
in front of the warmth
of the flames...**



Shown: Clean Air medium console with Maxiheat decromesh flue kit, grey matt tiled hearth and 4 piece tool set with wooden handles

The Clean Air Wood Heaters Environmental Commitment

Our heaters, designed in Australia to burn hardwood, are tested to the most stringent of standards. The current joint Australian and New Zealand Standard 4013/4012 measure particulate emissions and efficiency and we are proud to say our heaters exceed the requirements of these standards. Clean Air proudly supports the initiatives of Landcare Australia to protect, restore and sustainably manage Australia's natural environment.



Freestanding Console Series

Classic in design and expertly constructed, the Clean Air freestanding console will be the focal point of any room. Available in 3 sizes, the console series will warm your home on the coldest of winter nights



Shown: Clean Air medium console with Maxiheat decromesh flue kit and black gloss tiled corner hearth

Large Console

Coverage: 350m²
Peak Heat Output: 22.1kW
Burn Time: up to 12 hours
Efficiency: 63%
Emissions: 1.7g/kg
Maximum Log Size: 420mm
Construction: 6mm
Firebox Size: 0.09m³

Medium Console

Coverage: 300m²
Peak Heat Output: 14.6kW
Burn Time: up to 10 hours
Efficiency: 68%
Emissions: 2.3g/kg
Maximum Log Size: 370mm
Construction: 6mm
Firebox Size: 0.07m³

Small Console

Coverage: 200m²
Peak Heat Output: 11.3kW
Burn Time: up to 8 hours
Efficiency: 61%
Emissions: 1.9g/kg
Maximum Log Size: 330mm
Construction: 6mm
Firebox Size: 0.05m³

Fireplace Standard Inserts

Convert your existing chimney into a beautiful fireplace without the smoky mess of a traditional open fire. Our fireplace inserts are designed to be installed into a full brick masonry chimney and are more efficient at heating larger spaces than an open fireplace



Shown: Clean Air small insert with black gloss tiled insert hearth

Large Fireplace Console

Coverage: 330m²
Peak Heat Output: 17.7kW
Burn Time: up to 8.5 hours
Efficiency: 68%
Emissions: 2.1g/kg
Maximum Log Size: 420mm
Construction: 6mm
Firebox Size: 0.09m³

Medium Fireplace Console

Coverage: 280m²
Peak Heat Output: 13.4kW
Burn Time: up to 8 hours
Efficiency: 68%
Emissions: 2.1g/kg
Maximum Log Size: 420mm
Construction: 6mm
Firebox Size: 0.09m³

Small Fireplace Console

Coverage: 180m²
Peak Heat Output: 9.1kW
Burn Time: up to 6.5 hours
Efficiency: 71%
Emissions: 1.4g/kg
Maximum Log Size: 330mm
Construction: 6mm
Firebox Size: 0.05m³

Fireplace Premium Inserts

Create a focal point in any room with the addition of a chic wood fire. Our Fireplace Premium inserts are available in 2 design styles - Victorian for an ornate taste of old world charm or Edwardian for the modern minimalist in favour of cleaner lines



Victorian Fireplace Insert

The very picture of luxury, old-world elegance and sophistication, and beautifully finished with an optional mantelpiece, the Victorian insert commands attention as you walk into the room.



Edwardian Fireplace Insert

The sleek fascia of the Edwardian insert offers a minimalist design which will suit any décor, be it classic or modern. The slimline surround highlights the large glass panel, making this wood heater the centre piece of any room.



Shown: Clean Air medium Victorian insert with black gloss tiled insert hearth and mantle

Large Fireplace Insert

Coverage: 330m²
Peak Heat Output: 17.7kW
Burn Time: up to 8.5 hours
Efficiency: 68%
Emissions: 2.1g/kg
Maximum Log Size: 420mm
Construction: 6mm
Firebox Size: 0.09m³

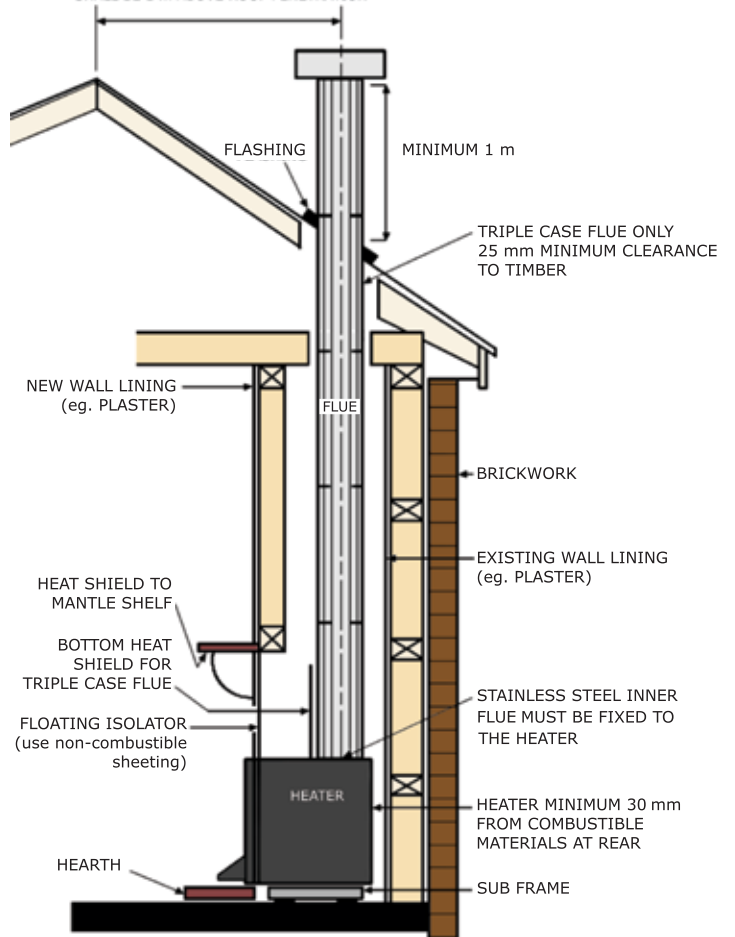
Medium Fireplace Insert

Coverage: 280m²
Peak Heat Output: 13.4kW
Burn Time: up to 8 hours
Efficiency: 67%
Emissions: 2.3g/kg
Maximum Log Size: 370mm
Construction: 6mm
Firebox Size: 0.07m³

Zero Clearance

Transform a dull blank wall into a magnificent fireplace with our Zero Clearance models. They come ready to install out of the box; no additional components needed. Most importantly, no major structural alterations or existing chimney is required.

INSTALLATION TO AS/NZS 2918:2001 MINIMUM HEIGHT OF THE FLUE SYSTEM FURTHER THAN 3m FROM THE HIGHEST POINT OF THE ROOF SHALL BE 1m ABOVE ROOF PENETRATION



Simple timber frame



No need for brickwork



Non-combustible surround



Step 1:

Choose your zero clearance wood heater in Medium or large with standard, Victorian or Edwardian fascia.

Step 2:

The simple timber frame system is easy and inexpensive to install. No bricks or mortar required and it can be fitted directly onto a timber floor using an appropriate floor plate

Step 3:

Complete the look with a mantelpiece, available in 3 designs

Large Standard Zero with Balmoral Mantelpiece



Large Edwardian Zero with Edwardian Mantelpiece



Large Victorian Zero with Victorian Mantelpiece



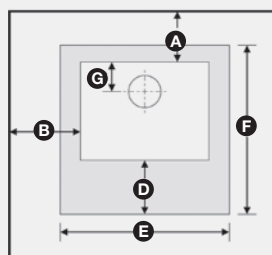
Specifications & Clearance

		REAR WALL (mm)	SIDE WALL (mm)	CORNERS (mm)	HEARTH FRONT (mm)	HEARTH MINIMUM DIMENSIONS		REAR TO CENTRE FLUE (mm)
		A	B	C	D	WIDTH (mm)	DEPTH (mm)	F
FREESTANDING	CLEARANCES:	150	350	50	450	1040	1090	230
	SPECIFICATIONS:	CABINET (mm): 855 (H) x 845 (W) x 648 (D)				APPROX. HEAT CAPACITY: 350m ²		
LARGE CONSOLE	CLEARANCES:	100	300	50	350	940	920	230
	SPECIFICATIONS:	CABINET (mm): 805 (H) x 745 (W) x 598 (D)				APPROX. HEAT CAPACITY: 300m ²		
MEDIUM CONSOLE	CLEARANCES:	100	300	50	350	890	890	194
	SPECIFICATIONS:	CABINET (mm): 756 (H) x 695 (W) x 566 (D)				APPROX. HEAT CAPACITY: 200m ²		
SMALL CONSOLE	CLEARANCES:	100	300	50	350	890	890	194
	SPECIFICATIONS:	CABINET (mm): 756 (H) x 695 (W) x 566 (D)				APPROX. HEAT CAPACITY: 200m ²		

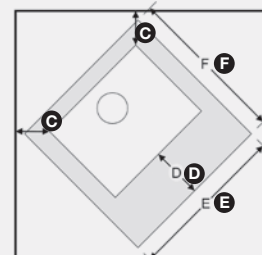
With all freestanding and inbuilt heaters, it is imperative to use a non-combustible hearth to protect your flooring and its surrounding area. We recommend following our minimum hearth clearance diagrams as outlined:

Refer to the product installation manual for final specifications

Standard Installation



Corner Installation



	CABINET (mm)	WEIGHT	FASCIA (mm)	APPROX HEAT CAPACITY	HEARTH (mm)
--	--------------	--------	-------------	----------------------	-------------

STANDARD INSERTS					
LARGE	645 (H) x 715 (W) x 512 (D)	184kg	760 (H) x 1070 (W)	330m ²	1050 (W) x 480 (D)
ZERO CLEARANCE	800 (H) x 825 (W) x 565 (D)	200kg		330m ²	
DISTANCE FROM START OF FASCIA TO START OF FLUE 240mm					
MEDIUM	595 (H) x 615 (W) x 462 (D)	147kg	710 (H) x 970 (W)	280m ²	950 (W) x 480 (D)
ZERO CLEARANCE	750 (H) x 725 (W) x 515 (D)	160kg		280m ²	
DISTANCE FROM START OF FASCIA TO START OF FLUE 190mm					
SMALL	555 (H) x 565 (W) x 400 (D)	120kg	670 (H) x 920 (W)	180m ²	890 (W) x 350 (D)
DISTANCE FROM START OF FASCIA TO START OF FLUE 190mm					

PREMIUM INSERTS					
LARGE EDWARDIAN	645 (H) x 715 (W) x 512 (D)	184kg	760 (H) x 905 (W)	330m ²	1050 (W) x 480 (D)
ZERO CLEARANCE	800 (H) x 825 (W) x 565 (D)	200kg		330m ²	
DISTANCE FROM START OF FASCIA TO START OF FLUE 240mm					
MEDIUM EDWARDIAN	595 (H) x 615 (W) x 462 (D)	147kg	710 (H) x 805 (W)	280m ²	950 (W) x 480 (D)
ZERO CLEARANCE	750 (H) x 725 (W) x 515 (D)	160kg		280m ²	
DISTANCE FROM START OF FASCIA TO START OF FLUE 190mm					
LARGE VICTORIAN	645 (H) x 715 (W) x 512 (D)	184kg	885 (H) x 905 (W)	330m ²	1050 (W) x 480 (D)
ZERO CLEARANCE	800 (H) x 825 (W) x 565 (D)	200kg		330m ²	
DISTANCE FROM START OF FASCIA TO START OF FLUE 240mm					
MEDIUM VICTORIAN	595 (H) x 615 (W) x 462 (D)	147kg	825 (H) x 805 (W)	280m ²	950 (W) x 480 (D)
ZERO CLEARANCE	750 (H) x 725 (W) x 515 (D)	160kg		280m ²	
DISTANCE FROM START OF FASCIA TO START OF FLUE 190mm					

Your Authorised Clean Air Dealer



15 YEAR
FIREBOX
STRUCTURAL
WARRANTY



Building A2, Campus Business Park
350-374 Parramatta Rd Homebush NSW 2140
www.cleanairwoodheaters.com.au P: 02 9735 4100

All information is correct to the best of Clean Air Wood Heaters knowledge at the time of printing. Clean Air Wood Heaters rely on the reports from the Testing Authorities in any claim made regarding adherence to Australian Standards and EPA requirements. Details provided in this brochure regarding the installation of a Zero Clearance System are for information purposes only and should not be relied upon as full installation instructions. Heating capacities may vary according to firewood species and moisture content; climatic conditions and home construction; individual room or home dimension; and installation levels. The manufacturer reserves the right to alter design and specifications at anytime.