



# WOOD HEATING COLLECTION

**CLEAN AIR  
WOODHEATERS**



# KEEP YOUR FAMILY CÖSY IN THE COLDER MONTHS WITH THE WARMTH AND TIMELESS CHARM OF A WOOD FIRE ▼

Clean Air wood heaters feature a unique and advanced firebox, designed and engineered with quality materials for optimum performance. Our low emissions and high efficiencies simply mean that a Clean Air wood heater is the perfect choice when looking for a quality wood heater to warm your home this winter.

- ▶ Heat exchange activation tubes for greater heat output. Not seen on any other wood heaters
- ▶ Double Glazed curved front door creates a modern look
- ▶ Natural Convection design allows the hot air to naturally circulate around the firebox and into the room

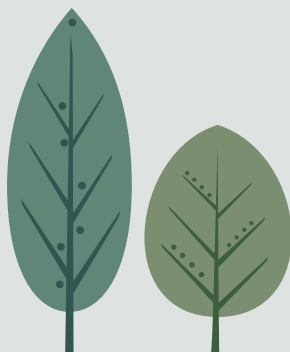


- ◀ Remote controlled 3 speed fan allows you to control the amount of air heat circulated from your armchair
- ◀ Unique side viewing glass provides more fire viewing area and increases radiant heat output
- ◀ Removable handle
- ◀ Skamolex™ lined firebox pushes the heat back into the fire, making it cleaner burning

## 15 YEAR STRUCTURAL FIREBOX WARRANTY

Every Clean Air wood heater comes with a 15 year firebox structural warranty. Each heater is crafted with quality materials and unrivalled construction for ultimate performance winter after winter.

## ENVIRONMENT ▼



The range of Clean Air wood heaters are designed to burn hardwood and are tested to the most stringent of world standards. The current joint Australian and New Zealand Standards 4013/4012 measure particulate emissions and efficiency and we are proud to say our heaters exceed the requirements of these Standards.

When you purchase a Clean Air wood heater for your home it will not only give you a modern, clean burning, highly efficient method of keeping your home warm throughout winter you are also making a choice to support Landcare Australia. Clean Air wood heaters have been a member of the Australian Home Heating Association for over 25 years, and their membership fees in turn support Landcare, whose working towards restoring the environment and protecting its long-term viability.

Wood, as a form of natural energy, is the only sustainable and renewable fuel source for heat generation. Wood burning in a Clean Air wood heater does not add to the greenhouse effect. If wood is left to naturally decay, consumed in a bush fire or burnt in a wood heater, it emits similar levels of CO2. Clean Air manufacture slow combustion wood heaters using low emission technology to gain maximum heat output with minimum emission into the atmosphere.





CLEAN AIR INSERT HEATERS ▼



**15 YEAR  
STRUCTURAL  
FIREBOX  
WARRANTY**

### SMALL INSERT ▼

- Coverage:** 180m<sup>2</sup>
- Peak Heat Output:** 9.6 kW
- Burn Time:** up to 7 hours
- Maximum Log Size:** 340mm
- Construction:** 6mm steel with Skamolex™ lining
- Firebox Volume:** 0.05m<sup>3</sup>
- Recommended Hearth:**  
Maxiheat Insert Hearth (MXTHINSBLK/GRY)

### MEDIUM INSERT ▼

- Coverage:** 280m<sup>2</sup>
- Peak Heat Output:** 12.5 kW
- Burn Time:** up to 9 hours
- Maximum Log Size:** 390mm
- Construction:** 6mm steel with Skamolex™ lining
- Firebox Volume:** 0.07m<sup>3</sup>
- Recommended Hearth:**  
Maxiheat Insert Hearth (MXTHINSBLK/GRY)

### LARGE INSERT ▼

- Coverage:** 330m<sup>2</sup>
- Peak Heat Output:** 15.9 kW
- Burn Time:** up to 10 hours
- Maximum Log Size:** 420mm
- Construction:** 6mm steel with Skamolex™ lining
- Firebox Volume:** 0.1m<sup>3</sup>
- Recommended Hearth:**  
Maxiheat Insert Hearth (MXTHINSBLK/GRY)

BurnWise <small>An initiative of the Australian Home Heating Association</small>		
<b>EFFICIENCY</b>	This model <span style="width: 66%;"></span>	66%
	Australian Standard <span style="width: 60%;"></span>	>60%
<b>PARTICLE EMISSIONS</b>	This model <span style="width: 33%;"></span>	1.0g/kg
	Australian Standard <span style="width: 66%;"></span>	<1.5g/kg

BurnWise <small>An initiative of the Australian Home Heating Association</small>		
<b>EFFICIENCY</b>	This model <span style="width: 66%;"></span>	66%
	Australian Standard <span style="width: 60%;"></span>	>60%
<b>PARTICLE EMISSIONS</b>	This model <span style="width: 53%;"></span>	0.8g/kg
	Australian Standard <span style="width: 66%;"></span>	<1.5g/kg

BurnWise <small>An initiative of the Australian Home Heating Association</small>		
<b>EFFICIENCY</b>	This model <span style="width: 62%;"></span>	62%
	Australian Standard <span style="width: 60%;"></span>	>60%
<b>PARTICLE EMISSIONS</b>	This model <span style="width: 47%;"></span>	0.7g/kg
	Australian Standard <span style="width: 66%;"></span>	<1.5g/kg

\* All Clean Air heaters come in a high temperature metallic Black finish and come standard with a Remote Controlled 3 speed fan







LONG  
BURN  
TIMES  
FOR A  
WARMER  
WINTER

**15 YEAR  
STRUCTURAL  
FIREBOX  
WARRANTY**





## SMALL CONSOLE ▼

815H x 709W x 592D mm

**Coverage:** Up to 200m<sup>2</sup>

**Peak Heat Output:** 12kW

**Burn Time:** up to 8 hours

**Maximum Log Size:** 340mm

**Construction:** 6mm steel with Skamolex™ lining

**Firebox Volume:** 0.05m<sup>3</sup>

**Recommended Hearth:**

Maxiheat 1m Tiled Hearth (MXTH1BLK2/GRY)

BurnWise <small>An initiative of the Australian Home Heating Association</small>		
EFFICIENCY	This model	72%
	Australian Standard	>60%
PARTICLE EMISSIONS	This model	0.95g/kg
	Australian Standard	<1.5g/kg



## MEDIUM CONSOLE ▼

865H x 759W x 615D mm

**Coverage:** Up to 300m<sup>2</sup>

**Peak Heat Output:** 14.2kW

**Burn Time:** up to 10 hours

**Maximum Log Size:** 390mm

**Construction:** 6mm steel with Skamolex™ lining

**Firebox Volume:** 0.07m<sup>3</sup>

**Recommended Hearth:**

Maxiheat Insert Hearth (MXTH12BLK2/GRY)

BurnWise <small>An initiative of the Australian Home Heating Association</small>		
EFFICIENCY	This model	70%
	Australian Standard	>60%
PARTICLE EMISSIONS	This model	0.85g/kg
	Australian Standard	<1.5g/kg



## LARGE CONSOLE ▼

915H x 859W x 700D mm

**Coverage:** Up to 350m<sup>2</sup>

**Peak Heat Output:** 19.2kW

**Burn Time:** up to 12 hours

**Maximum Log Size:** 420mm

**Construction:** 6mm steel with Skamolex™ lining

**Firebox Volume:** 0.1m<sup>3</sup>

**Recommended Hearth:**

Maxiheat Full Slab Hearth (MXFSH12DBLK/LGRY)

BurnWise <small>An initiative of the Australian Home Heating Association</small>		
EFFICIENCY	This model	70%
	Australian Standard	>60%
PARTICLE EMISSIONS	This model	0.76g/kg
	Australian Standard	<1.5g/kg

\* All Clean Air heaters come in a high temperature metallic Black finish and come standard with a Remote Controlled 3 speed fan

The traditional and refined look of the Heritage surround is designed to fit behind the Clean Air insert heater making it suitable for older style fireplaces.



**15 YEAR  
STRUCTURAL  
FIREBOX  
WARRANTY**

Clean Air's range of insert wood heaters can also be installed into timber stud wall or cabinet provided they are fitted with a Maxiheat Zero Clearance Box and flue kit (MXZEROBX + MXFK3Z).

Making Clean Air inserts an ideal heating solution for any new home builder or renovator who is looking for the warmth, comfort and ambiance of an insert wood heater but doesn't have or want a masonry/brick fireplace.

\*Medium and Large available with a Heritage surround, as pictured

### MEDIUM HERITAGE INSERT ▼

- Coverage:** Up to 280m<sup>2</sup>
- Peak Heat Output:** 12.5 kW
- Burn Time:** up to 9 hours
- Maximum Log Size:** 390mm
- Construction:** 6mm steel with Skamolex™ lining
- Firebox:** 0.07m<sup>3</sup>
- Recommended Hearth:**  
Maxiheat Insert Hearth (MXTHINSBLK/GRY)

BurnWise <small>An initiative of the Australian Home Heating Association</small>		
EFFICIENCY	This model	66%
	Australian Standard	>60%
PARTICLE EMISSIONS	This model	0.8g/kg
	Australian Standard	<1.5g/kg

### LARGE HERITAGE INSERT ▼

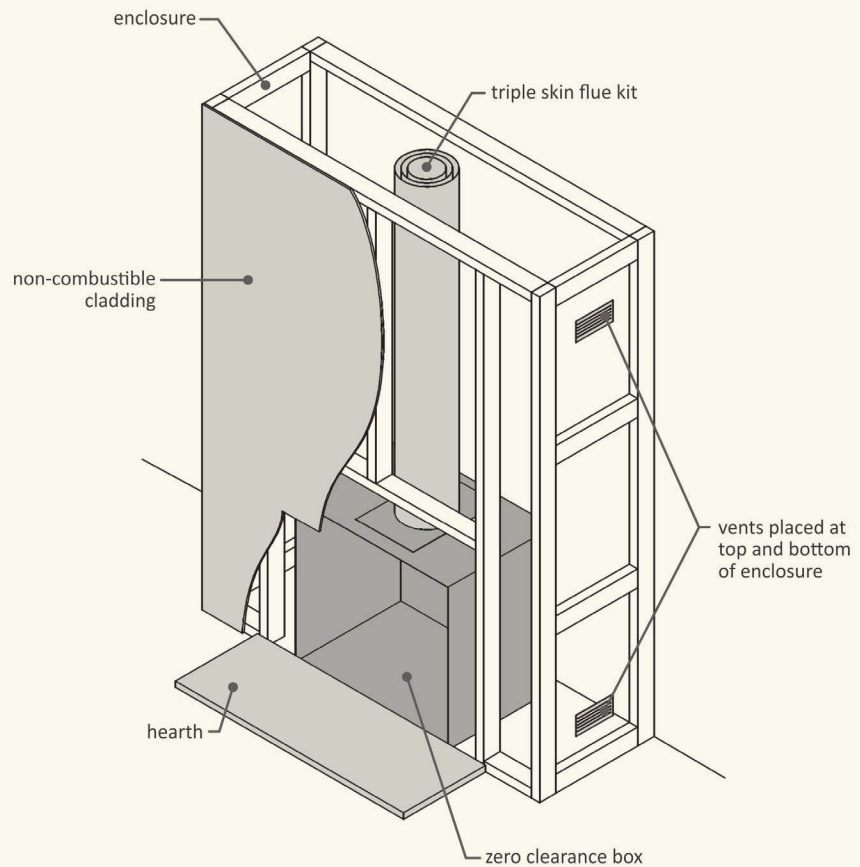
- Coverage:** Up to 330m<sup>2</sup>
- Peak Heat Output:** 15.9 kW
- Burn Time:** up to 10 hours
- Maximum Log Size:** 420mm
- Construction:** 6mm steel with Skamolex™ lining
- Firebox Volume:** 0.1m<sup>3</sup>
- Recommended Hearth:**  
Maxiheat Insert Hearth (MXTHINSBLK/GRY)

BurnWise <small>An initiative of the Australian Home Heating Association</small>		
EFFICIENCY	This model	62%
	Australian Standard	>60%
PARTICLE EMISSIONS	This model	0.7g/kg
	Australian Standard	<1.5g/kg

# ZERO CLEARANCE INSTALLATION

Transform a dull blank wall into a magnificent fireplace with our Zero Clearance models. Most importantly, no major structural alterations or existing chimney is required.

Refer to instruction manual or website ([www.cleanairwoodheaters.com.au](http://www.cleanairwoodheaters.com.au)) for additional information, including minimum clearances and hearth specifications.



## SPECIFICATIONS

	CABINET (mm)	FASCIA (mm)	APPROX HEAT CAPACITY	MINIMUM HEARTH (mm)	TOP CLEARANCE TO MANTLE (mm)	SIDE CLEARANCE TO MANTLE COLUMN (mm)
<b>STANDARD INSERTS</b>						
<b>SMALL</b>	546 (H) x 608 (W) x 447 (D)	596 (H) x 750 (W)	330m <sup>2</sup>	500(D) x 921(W) x 56 THICK INCLUDING A 15MM AIR GAP (MXTHINSBLK/GRY or equivalent)	550	50
<b>ZERO CLEARANCE</b>	817 (H) x 838 (W) x 578 (D)					
<b>DISTANCE FROM REAR OF FASCIA TO CENTRE FLUE 268mm</b>						
<b>MEDIUM</b>	596 (H) x 658 (W) x 487 (D)	646 (H) x 800 (W)	280m <sup>2</sup>	500(D) x 921(W) x 56 THICK INCLUDING A 15MM AIR GAP (MXTHINSBLK/GRY or equivalent)	550	50
<b>ZERO CLEARANCE</b>	817 (H) x 838 (W) x 578 (D)					
<b>DISTANCE FROM REAR OF FASCIA TO CENTRE FLUE 308mm</b>						
<b>LARGE</b>	646 (H) x 758 (W) x 527 (D)	696 (H) x 900 (W)	330m <sup>2</sup>	600(D) x 1071(W) x 56 THICK INCLUDING A 15MM AIR GAP (MXTHINSBLK/GRY or equivalent)	550	50
<b>ZERO CLEARANCE</b>	817 (H) x 838 (W) x 578 (D)					
<b>DISTANCE FROM REAR OF FASCIA TO CENTRE FLUE 348mm</b>						
<b>HERITAGE INSERTS</b>						
<b>MEDIUM</b>	546 (H) x 608 (W) x 447 (D)	765 (H) x 935 (W)	330m <sup>2</sup>	500(D) x 921(W) x 56 THICK INCLUDING A 15MM AIR GAP (MXTHINSBLK/GRY or equivalent)	550	50
<b>ZERO CLEARANCE</b>	817 (H) x 838 (W) x 578 (D)					
<b>DISTANCE FROM REAR OF FASCIA TO CENTRE FLUE 308mm</b>						
<b>LARGE</b>	646 (H) x 758 (W) x 527 (D)	815 (H) x 1035 (W)	330m <sup>2</sup>	600(D) x 1071(W) x 56 THICK INCLUDING A 15MM AIR GAP (MXTHINSBLK/GRY or equivalent)	550	50
<b>ZERO CLEARANCE</b>	817 (H) x 838 (W) x 578 (D)					



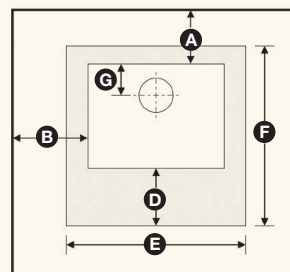


	FLUE KIT	REAR WALL (mm)	SIDE WALL (mm)	CORNERS (mm)	HEARTH FRONT (mm)	HEARTH MINIMUM DIMENSIONS		REAR TO CENTRE FLUE (mm)
						WIDTH (mm)	DEPTH (mm)	
FREESTANDING		A	B	C	D	E	F	G
<b>SMALL CONSOLE</b>	Maxiheat Decromesh Default Flue Kit with inner shield	100	450	100	300	922	992	215
	Maxiheat Non-Perforated flue kit with inner shield							
HEATER SIZE (mm): 815 (H) x 709 (W) x 592 (D)		APPROX. HEAT CAPACITY: 200m <sup>2</sup>						
<b>MEDIUM CONSOLE</b>	Maxiheat Decromesh Default Flue Kit with inner and outer shields	150	550	200	300	971	995	231
	Maxiheat Non-Perforated flue kit with inner shield and outer shields							
HEATER SIZE (mm): 865 (H) x 759 (W) x 615 (D)		APPROX. HEAT CAPACITY: 300m <sup>2</sup>						
<b>LARGE CONSOLE</b>	Maxiheat Decromesh Default Flue Kit with inner and outer shields	250	650	225	300	1071	1180	240
	Maxiheat Non-Perforated flue kit with inner shield and outer shields							
HEATER SIZE (mm): 915 (H) x 859 (W) x 700 (D)		APPROX. HEAT CAPACITY: 350m <sup>2</sup>						

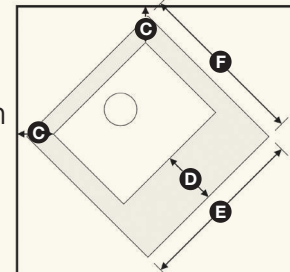
With all freestanding and inbuilt heaters, it is imperative to use a non-combustible hearth to protect your flooring and its surrounding area.

Refer to instruction manual or website ([www.cleanairwoodheaters.com.au](http://www.cleanairwoodheaters.com.au)) for additional information, including minimum clearances and hearth specifications.

Standard Installation



Corner Installation



## YOUR AUTHORISED CLEAN AIR DEALER



**15 YEAR  
STRUCTURAL  
FIREBOX  
WARRANTY**



Clean Air wood heaters proudly support the activities of Landcare Australia through its membership of the AHHA



GLG Australia PTY LTD – Building A2, Campus Business Park, 350-374 Parramatta Rd Homebush NSW 2140.  
[www.cleanairwoodheaters.com.au](http://www.cleanairwoodheaters.com.au) P: 02 9735 4100

All information is correct to the best of Clean Air Wood Heaters knowledge at the time of printing. Clean Air Wood Heaters rely on the reports from the Testing Authorities in any claim made regarding adherence to Australian Standards and EPA requirements. Details provided in this brochure regarding the installation of a Zero Clearance System are for information purposes only and should not be relied upon as full installation instructions. Heating capacities may vary according to firewood species and moisture content; climatic conditions and home construction; individual room or home dimension; and installation levels. The manufacturer reserves the right to alter design and specifications at anytime.

Jan 2020